

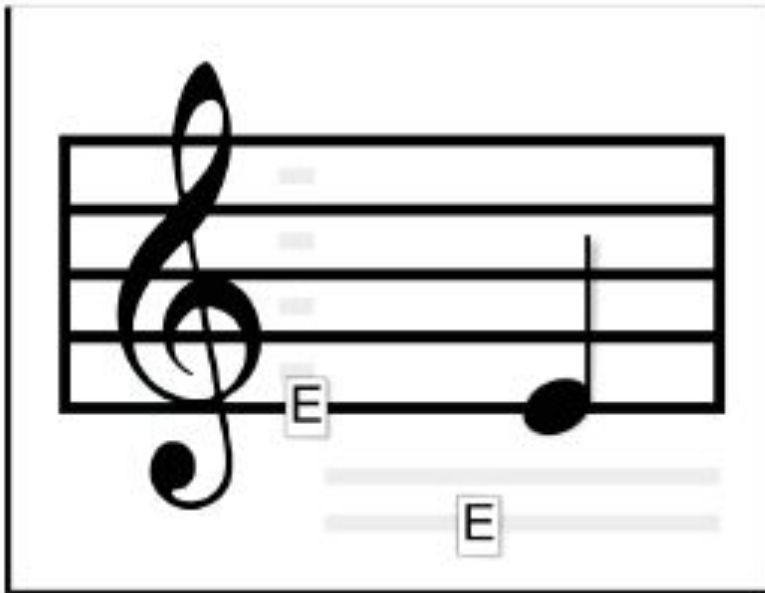
Reading Music



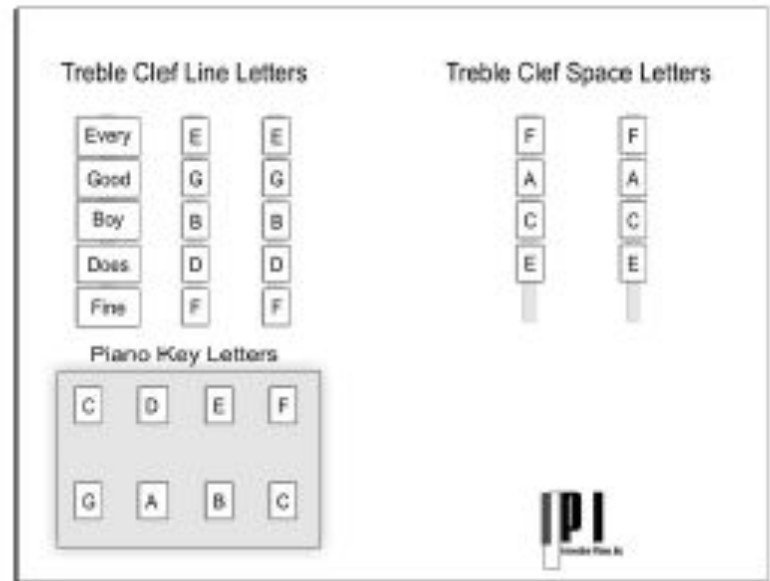
Treble Clef Board

Just like typical piano lessons, you will also be teaching your students how to *read* music as well. Find your Treble Clef Board and keep it near the piano for reference.

When initially setting up your board, place the letter E (or the word Every) and the note on the first line. Also add the correct letter to the space below. Refer to the diagram for this on the following page.



Front



Back



Need Help? Have Comments or Questions?

contacts@innovativepiano.com

Here are the four steps you will help your student use when using the Treble Clef Board. The speed at which you fade each of these prompts is totally dependent on your student, though each student should begin with all these prompts initially. For more information on this refer to the Reading Music section.

